

**FDFT1 Antibody**  
**Rabbit mAb**  
**Catalog # AP92089****Specification**

---

**FDFT1 Antibody - Product Information**

Application	WB, IHC, ICC, IP
Primary Accession	<a href="#">P37268</a>
Reactivity	Rat
Clonality	Monoclonal
<b>Other Names</b>	
DGPT; ERG9; FDFT1; SQS; Squalene synthase; SS;	

Isotype	Rabbit IgG
Host	Rabbit
Calculated MW	48115 Da

**FDFT1 Antibody - Additional Information**

Dilution	WB~~1:1000 IHC~~1:100~500 ICC~~N/A IP~~N/A
Purification	Affinity-chromatography
Immunogen	A synthesized peptide derived from human FDFT1
Description	Critical branch point enzyme of isoprenoid biosynthesis that is thought to regulate the flux of isoprene intermediates through the sterol pathway.
Storage Condition and Buffer	Rabbit IgG in phosphate buffered saline , pH 7.4, 150mM NaCl, 0.02% sodium azide and 50% glycerol. Store at +4°C short term. Store at -20°C long term. Avoid freeze / thaw cycle.

**FDFT1 Antibody - Protein Information****Name** FDFT1**Function**

Catalyzes the condensation of 2 farnesyl pyrophosphate (FPP) moieties to form squalene. Proceeds in two distinct steps. In the first half-reaction, two molecules of FPP react to form the stable presqualene diphosphate intermediate (PSQPP), with concomitant release of a proton and a molecule of inorganic diphosphate. In the second half-reaction, PSQPP undergoes heterolysis, isomerization, and reduction with NADPH or NADH to form squalene. It is the first committed enzyme of the sterol biosynthesis pathway.

**Cellular Location**

Endoplasmic reticulum membrane {ECO:0000250|UniProtKB:Q02769}; Multi-pass membrane protein

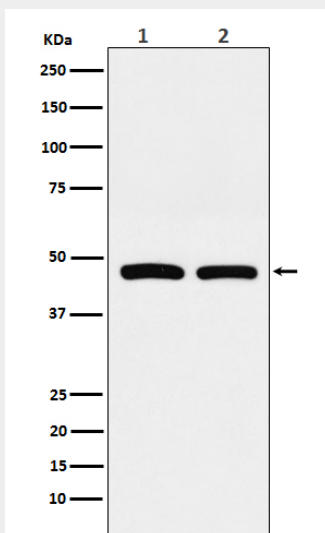
**Tissue Location**

Widely expressed..

**FDFT1 Antibody - Protocols**

Provided below are standard protocols that you may find useful for product applications.

- [Western Blot](#)
- [Blocking Peptides](#)
- [Dot Blot](#)
- [Immunohistochemistry](#)
- [Immunofluorescence](#)
- [Immunoprecipitation](#)
- [Flow Cytometry](#)
- [Cell Culture](#)

**FDFT1 Antibody - Images**

Western blot analysis of FDFT1 expression in (1) HepG2 cell lysate; (2) RAW264.7 cell lysate.